



# Tyne Pedestrian & Cyclist Tunnels



## Refurbishment Progress March 2019



As the works are nearing completion new windows have been installed and are ready to be painted.

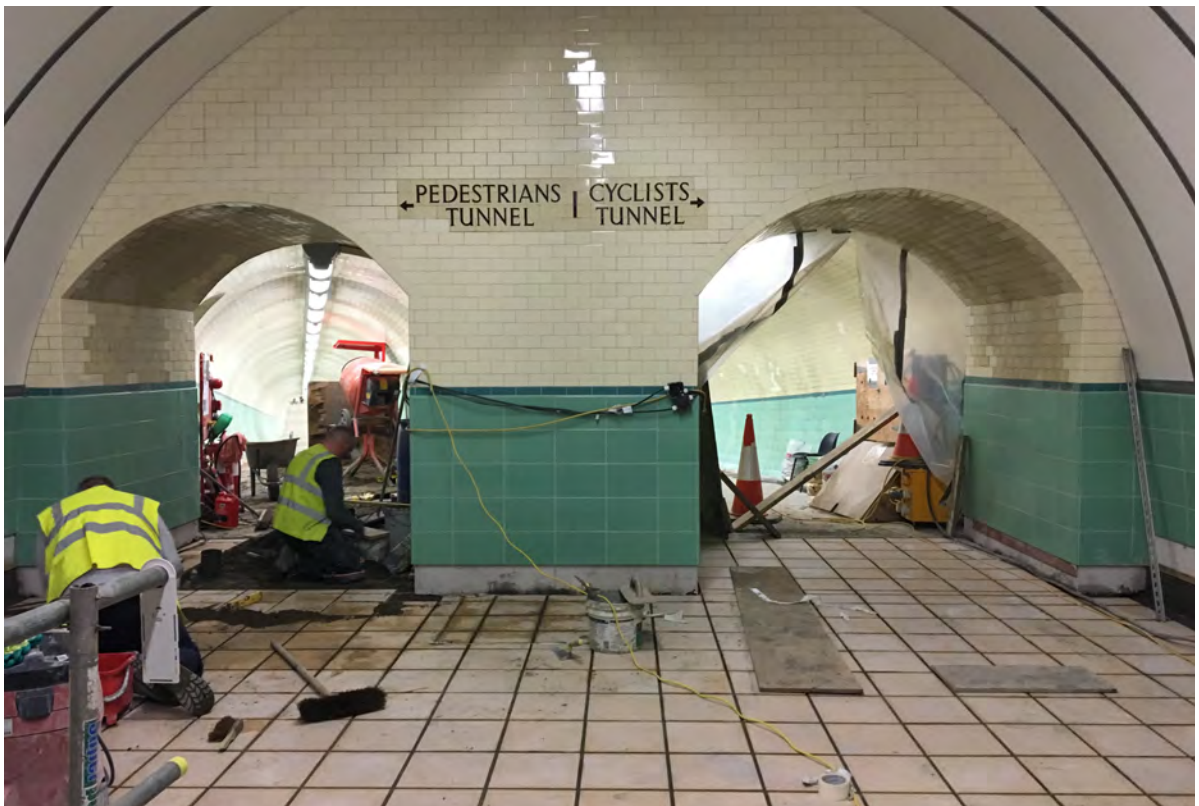


The new roller shutter doors have been installed and commissioned. The emergency access doorways have been widened to allow easier wheelchair egress and the doors have been fitted and will be glazed shortly.





The terrazzo flooring to the lower halls is nearing completion. The grouting, edge 'skirt' and final wall tile are yet to be installed.



The lower hall floors have been completely reconstructed. New steel beams and concrete slabs have been constructed. The terrazzo tile finish is being completed.





The glazed screens down the incline of the existing escalator have been installed. To allow the safe passage of the inclined lift.



The view from the lower hall up the inclined shaft shows the new lift and the glazed screen adjacent to the retained escalator.



The works in the main tunnels is complete and the cleaners are in preparing them for reopening.



The link tunnels to the vertical lifts are complete and just need to be cleaned down prior to reopening to the public.





Externally the paving has been relaid providing pedestrian access to the vertical lift.



New bollards and drop kerbs have been install to control vehicle access and assist easy access for pedestrians.





The new rotunda windows have been installed and the walls painted. The access scaffolding can now be stripped out .



The walls to the control rooms have been painted. Prior to a final clean down when the floor will also be painted.



Produced by  
North East Combined Authority  
c/o TT2 Limited, Tyne View Terrace  
Wallsend NE28 0PD

FOR MORE INFORMATION VISIT  
[www.tynepedestrianandcyclisttunnels.co.uk/](http://www.tynepedestrianandcyclisttunnels.co.uk/)



ARUP

CAPITA